

AYLESHAM

IN TOUCH

AUTUMN 2022 Series 2 No. 5

What shall we do with Station Field?

**VILLAGE
GUIDE**

Essential listing
of local groups,
organisations
and businesses

A community designed, safe, accessible, open space for the village?

By Jon Flaig,

*Secretary of Aylesham Hub**

FOUR years ago, Aylesham Hub was set up by Lawrence Knight, Billy Oliver and myself.

This followed a small public meeting the August before at which the idea for a new social centre - a village hall - was proposed.

A public consultation in 2018 demonstrated broad public support for the plan, but there were concerns about the site offered by Dover District Council: a piece of land on Station Field by the skate park and railway station.

Fast forward to August 2020 and this offer of space for the new facility was withdrawn by DDC, and by then the Hub team had concluded that additional development on the site would take up some very precious open space.

So what should happen to the area known as Station Field, or to generations of local kids as just “the field”?

Well, that’s the question we are asking now.

**Aylesham Hub Ltd is a a community co-operative registered with the FCA*



STATION Field, also known as Freddie’s Field by Dover council, has for generations been a beautiful green valley in the centre of the old village linking the railway station to Market Square.

Since 2016 some new roads have been built for the development and a small play area opened behind the Medical Centre, so the space we are looking at is the area (see map) just before you get to the skate Park.

Rows of new housing are to be built to the north of the area, and in other spaces nearby under Phase 3 of the current building programme.

But what is to happen to the area in the middle of the site? That’s where you come in.

We are launching a discussion in the village about turning the area into a beautiful, safe, accessible leisure facility.

We want to hear your ideas for making Station Field a useful outdoor family and community space.

**For more information
please email:
ayleshamhub@gmail.com**



PRIORITIES FOR THE SITE?

Early consultation has come with this list. Do you agree?

- | | |
|--|---|
| <input type="checkbox"/> SAFE AT ALL TIMES OF DAY | <input type="checkbox"/> POP-UP CAFE FACILITY |
| <input type="checkbox"/> SEATING AREAS | <input type="checkbox"/> PUBLIC TOILETS |
| <input type="checkbox"/> ACCESSIBLE TO WHEELCHAIRS | <input type="checkbox"/> BANDSTAND OR SIMILAR |
| <input type="checkbox"/> TREES AND PLANTING | <input type="checkbox"/> NO PERMANENT BUILDINGS |



DENISE CALDWELL

Hair & Beauty

“We are friendly
it’s just the way we
are! We want all of
our customers to feel
welcome and at ease.”

**Unit 1, Ackholt Road,
Aylesham CT3 3AJ**



find us on Facebook



caldwells_hairandbeauty

01304 842034

AYLESHAM

AUTUMN 2022

IN TOUCH



Aylesham
Parish Council

**VILLAGE
GUIDE**

COMMUNITY



HELPLINES



BUSINESS

THANKS to Dover District Council and Aylesham Parish Council for supporting us with grant funding received since our summer edition. This enables us to deliver a magazine to every letterbox we can find in the parish.

And, of course, we rely on the continued support of advertising from local businesses and projects. Please support them!

However, the words and opinions in this magazine are independent, and reflect the opinions only of the authors.

Aylesham In Touch is delivered **FREE** to **3,000** letterboxes in Aylesham. If for some reason we have missed you, OR if you would rather not receive the magazine in future please email ayleshamintouch@gmail.com

COVER IMAGE courtesy of
Lee O'Sullivan
[instagram.com/dronesdeep](https://www.instagram.com/dronesdeep)



This edition of
Aylesham In Touch
was put together by
Carina Jarvie (left)
and **Jon Flaig** (right)



Published by
Aylesham Hub
Ltd
[ayleshamhub@
gmail.com](mailto:ayleshamhub@gmail.com)

©2022. Published by Aylesham Hub Ltd - a community co-operative. Registered Office: 2 Aylesham Road, Snowdown CT15 4JN

We are now online with news updates and local listings:

ayleshamintouch.com

Thank you to all these organisations for help and support



AYLESHAM
District Community
Workshop Trust



snowdown CANARY

*taking a
birds-eye
view*



All the fun of the fayre

Aylesham4Aylesham
held its annual Fayre on
the Square in July.



Fun Begins at 50!



SUNSHINERS team at the Sing-Along Night
with The Bottles from Dover - see also page 8

The sun shone this year and
hundreds joined in the fun.
A4A are seeking volunteers
to join the team. Contact
them via Facebook.

A new look for Spinney Lane?

These draft plans emphasise safety
and 1B, Road Improvements to be



Welcome Neil

Neil Chester is the new Community Development Officer appointed by DDC.

We asked Neil to tell us what that involves: “As the community development officer for Aylesham, my role is to provide a direct link to Dover District Council. It will also provide support for the community to help deliver a wide range of community-based projects. Additionally, it involves researching and publicising specific funding opportunities.

“My aims are to work with existing and new residents of Aylesham to help deliver an integrated community. This is achievable by working with local groups on community projects, providing support and advice with funding.

“I am looking forward to meeting new and interesting people in the village, and helping highlight Aylesham further, enabling its community to flourish to full potential.



Village groups win grant bids



Village community groups did well in the Summer Round of Dover council funding bids:

Aylesham Carnival Association: £2,585.00

Aylesham People’s Cinema: £2,308.72

Aylesham Hub Ltd: (for this magazine) £1,579.34

The Winter Round of grants from £100 to £4,000 is open now until 28 September. See DDC website for details.

...y, access and the environment. They are an element of Phase 1A ...e paid for by s106 Developer Contributions.



INDEX

PAGE

AUTMNM EVENTS

Popular village events through the season until Christmas! 8 - 9

AYLESHAM ON FOOT

Through Ratling to Goodnestone taking in Jane Austen’s favourite walk 20 - 21

OPINION:

How do water companies get away with it? 18 - 19

WAITING FOR THE BUS

Can we get a better service for the village? 20 - 21

BECHANGE -

Fun Day, Baby Club and Weekly Diary 23 - 25

ASPIRE -

Garden Harvest 27

ARTS CLUB

A trip to Margate 28

VILLAGE GUIDE

Essential listing of local groups, organisations and businesses from page 30

VILLAGE EVENTS AUTUMN SEASON



Sunshiners

Over 50s Social Group

Coming This Autumn:

- 22 Sept Quiz, Games Night with cheese and crackers
- 6 Oct American supper, karaoke night
- 20 Oct Line Dancing
- 3 Nov Bell Ringing

17 Nov **Sunshiners One Year Anniversary Party Night** – Live entertainment. Hot food raffle tickets available 7pm till 10pm

Thursday nights,
7pm till 9.30pm
At St Finbarr's Catholic Church

- 8 Dec Christma Quiz, Christmas Silly Hat night
- 22 Dec **Christmas party night**
BIG live band buffet
raffle tickets available
7pm till 10pm
- 19 Jan Bingo

For more details or to book
Contact us on Facebook or
07852 451073

16 SEPT HERITAGE EVENTS

– see back page for more details



AYLESHAM has some of the most interesting street names of any village in Kent. Many of them reflect the times in which the village became established to meet the housing needs of mining families in the nearby colliery.

Join us on 16th September to find out what some of the names mean and why they are important.

If you would like to know about your street, come along and join us.

■ **We will also be launching the project to put together a STREET MAP of the Parish, that has all the roads marked including those in the recent development.**

**NEW film featuring
Aylesham through the years,
plus recent recording:**

LONDON based film-maker Chris Reeves has put together archive film clips involving the village and the wider coalfield area, **plus** new recording of interviews in Aylesham. The first cut of the new film "We Are Aylesham" will be screened in the evening, from 7pm. It's **FREE** but please book – **for details see right.**



SCAN THIS QR CODE



BOOK HERE

Also available from: Heritage Centre, Weds 10am-2pm; or call the Workshop Trust 01304 842826

PUBLICISE YOUR CHRISTMAS EVENTS

in our special edition:

*Aylesham
Christmas*

Email for details:
ayleshamintouch@gmail.com

Saint Finbarr's Roman Catholic Church

Market Place, Aylesham CT3 3EZ
Phone: 01304 206766

MASS TIMES

Wednesday 10.15am.
Sundays 11.15am



*Our parish
priests are*

Fr Jeff,
Fr Leo,
and Fr Jamie

VILLAGE EVENTS AUTUMN SEASON



Aylesham4Aylesham

The team has announced a couple of key village events ahead of its Annual General Meeting due to be held in early September.

CHRISTMAS LIGHTS AND TREE LIGHTING

Saturday 3 December

- details to be announced

FAYRE on the SQUARE 2023

Saturday 29 July 2023

- details to be announced

MACS CARS

Family Business Est. 2016

PRIVATE HIRE

•
**LOCAL AND
LONG DISTANCE
SPECIALISTS**
•

**"Many thanks to the community in
Aylesham and surrounding villages
for your support"**



07594 998 468

FOR A RATLING GOOD NIGHT OUT

Autumn schedule at the Ratling Social Club.

SEPTEMBER

Fri. 2nd	Andy Mills 8:30pm
Sun. 4th	Smiler 8:30pm
Fri. 9th	David Shepherd 8:30pm
Sun. 11th	Barry Goss 8:30pm
Sat. 17th	6 Shades of Grey
Sun. 18th	Barry Christopher 2pm, Bruce Winters 8pm
Fri. 23rd	Rock and Roll club (Si Cranston) 7:30pm
Sat. 24th	The Fix 8:30pm
Sun. 25th	Elvis Tribute 8:30pm
Fri. 30th	The Johns 8:30pm

OCTOBER

Sat. 1st	Darts open
Sat. 8th	Rock and Roll club 7:30pm
Sun. 9th	Young and Old 8:30pm
Fri. 14th	Word of Mouth 8:30pm
Sat. 15th	Turmoil 8:30pm
Sun. 16th	Dave Shepherd 8:30pm
Fri. 21st	Paul Messenger

RATLING SOCIAL CLUB BAR OPENING HOURS



Monday 12:00 - 21:00

Tuesday - Closed

Wednesday - Closed

Thursday 18:00 - 23:30

Friday 14:00 - 23:30

Saturday 12:00 - 23:30

Sunday 12:00 - 23:30



Last orders will be called 15
minutes before the bar closes
The club will close 30 minutes after
Website: www.ratlingclub.co.uk



Aylesham Home & Pet Supplies



nutriment
QUALITY RAW FOOD FOR CATS & DOGS



Forthglade
NATURAL PET FOOD FROM DEVON

PURINA
PRO PLAN
Small PET FOOD

**Caring for all your pet needs –
from the food to flea treatments!**

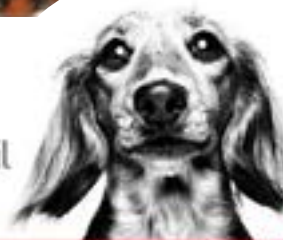
*Or just a chat about your pet – we
are here for you.*

We offer a price promise on all the
pet foods.




ROYAL CANIN

Incredible in Every Detail
Brand Authorized Seller



*If you can't find it in stock,
we will try and get it for you.*

66 Market Place, Aylesham CT3 3DZ

Phone: 01304 447767

NAJ

Indian Takeaway

Opening Hours

Open 6 days a week:

5pm to 10pm

CLOSED MONDAYS

01304 840 216

10 Market Place, Aylesham,

Canterbury CT3 3EY

www.najtakeaway.co.uk

FREE DELIVERY 10% DISCOUNT

On orders over £15.00
3 mile radius

On collected orders
over £15.00

COMPUTER PROBLEMS?

25 years experience

07910 975248

- PC / Tablet / Laptop
- Setup, Repairs.
- Internet issues
- Virus removal
- System tidy-up
- Video tapes to DVD

email: ruralpcrepairs@gmail.com

01304 832419

SEWING & ALTERATIONS

30 years experience

07948 188491

- Shortening & Taking in
- Zip replacement
- Lining replacement
- Curtain Alterations
- Evening & Bridal wear

email: ruralsewing@gmail.com

- www.ruralrepairs.com -

REGISTER NOW
TO BOOK A TRIAL
Ages 18mths to 18yrs

...all that
Jazz!
and tap
and modern
and ballet
and singing and musical theatre
and street and lyrical and acro



ENROL ONLINE AT
WWW.ARTISTSINMOTION.CO.UK

lisa@artistsinmotion.co.uk

or call 07974930845

Aylesham Baptist Church



Artists In Motion
School of Dance



CARNIVAL CAUGHT! photo-bombed by a Minion

CARNIVAL!

MISS AYLESHAM 2022 and her court have been busy touring around Kent and further afield to Witham, Bexhill and Swanage this summer.

The court have been winning awards and having fun representing Aylesham. As well as carnivals they also attend local events and are selling raffle tickets to raise money for Aylesham Carnival on Saturday 17th September. The fair, which is located in the square starts at midday and will be opened by Miss Aylesham and the Mayor of Dover.

All courts attending will be presented in the

arena at 12.30 and will perform their court curtses.

We will then have a schedule of events from various performers including performances from Aylesham Majorettes and Artist in Motion. Please note this year we are unable to have a bar or sell hot food from the fair - support our local businesses, we do have plenty of places for refreshments throughout the village!

The carnival parade moves off from Boulevard Courrieres at 5pm. We cannot wait to be back for another enjoyable carnival, we welcome volunteers who wish to be involved.

Do you want to take part in our parade? Please contact aylesham.carnival@hotmail.com

TFP SEWING STUDIO, AYLESHAM

New Sewing Classes for you or your little ones!

www.tolumitfp.fashion
www.tolumitfp.com

ONE ON ONE CLASSES

One on one Class

- Sewing machines available
- Experienced tutor
- Choose your time
- Choose your course
- Sessions from 1hr

AFTER-SCHOOL CRAFT CLUB- KIDS 6+

Creative Kids

- 8 participants/class
- Develops fine motor skills
- Social creative outlet for kids
- Develops creative imagination

ADULT SEWING CLUB

Beginners
Intermediate levels

- Sew it yourself
- 8 participants/class
- Learn pattern drafting
- Day classes
- Evening classes

Other services we offer:
Custom clothing, Prom dresses,
Alterations and Bridal wear

Call us now:
07424807439

Studio 5, Aylesham Business Park
Address: Ackholt Road, Aylesham
CT3 3AJ

CARNIVAL
Saturday 17th September 2022

FETE PARADE STALLS
available to book
PRIDE OF AYLESHAM make your merchandise stall!

www.ayleshamcarnival.co.uk

UK'S NATIONAL MISS SUCCESS FOR THREE GIRLS FROM AYLESHAM!

UK'S NATIONAL MISS was held in Manchester in July. It is part of the Pageant Girl Weekender competition covering the whole of the UK, and is open to girls and ladies 12 and up.

There were three ladies from Aylesham competing this year, its second year of running. Ella Richardson - in the Junior category. Charlotte O'Sullivan - in the Teen category. Kerys Squire - in the Miss category.

Ella and Kerys both won the titles in their divisions with Charlotte placing first runner up.

Charlotte and Ella both started their journey with Aylesham Carnival and have both been Miss Aylesham. They have both been amazing ambassadors over the past five years for the village.

Kerys and Ella will now represent their titles for the next year and will handover to the next ladies at next year's final which will be held in July 2023 - would you like to enter? Please visit uksnationalmiss.com



KERYS SQUIRE Photo by Brian Hayes

Barcelona Pedal Power



AFTER eight days hard riding the team finally completed the cycle from Calais to Barcelona.

It was hard and hot with a few mishaps on the way but the whole team made it.

A big thanks is due to those that rode, to the support driver Eric and of course to everyone single one of you who contributed to our cause.

We've managed to collect £6500 which will be split between Kobi's family and the Slide Away charity.



2022 -2023 FIXTURES

1st OCTOBER – AWAY – THANET WANDERERS II

8th OCTOBER – AWAY – MEDWAY IV

15th OCTOBER – HOME – GILLINGHAM II

29th OCTOBER – HOME – ASHFORD II

5th NOVEMBER – AWAY – SITTINGBOURNE II

12th NOVEMBER - HOME – ASH I

26th NOVEMBER – AWAY – DEAL & BETTS II

10th DECEMBER – HOME – DOVER II

17th DECEMBER – AWAY – ASH I

7th JANUARY – HOME – THANET WANDERERS II

14th JANUARY – AWAY – GILLINGHAM II

28th JANUARY – AWAY – ASHFORD II

11th FEBRUARY – HOME – SITTINGBOURNE

4th MARCH – HOME – DEAL & BETTS II

11th MARCH – HOME – MEDWAY IV

25th MARCH - AWAY – DOVER II

NEW AND OLD PLAYERS/SUPPORTERS WELCOME FOR MORE INFORMATION CONTACT:



snowy ruggers



@snowdowncfc – Aylesham Welfare Leisure Centre CT3 3BE

Workshop Trust News

EMILY Barnes, formerly a Community Development Officer for Dover council has returned to the village to lead the team at the Workshop Trust.

Appointed at the end of June, Emily tells us: "I was so pleased to be returning to the village and have had a great welcome back. The team here have been working really hard and the Trust and Business Park are in good shape and we are looking forward to building on this.

CHALLENGES

"We have been very busy already, starting to reach out to groups and local organisations.

"The Trustees and our team are realistic about what looks like a challenging few years ahead but are keen to make sure the Trust is able to play its part in supporting the local community, the businesses onsite and celebrating the resilience of Aylesham village.



EMILY makes a new start

"One of our first events will be the Heritage Open Day on the 16th September. This will be a chance for families to come down have fun, learn about the street on which they live and we are really excited about the film premier as this will have old and modern footage in. You may even spot yourself on the big screen!"



AYLESHAM
District Community
Workshop Trust
www.awt.org.uk

Aylesham Community Project, Ackholt Road, Aylesham, Kent CT3 3AJ ☎ 01304 842826

- **Conference/Training Rooms for hire**
- **Hall Hire for Community Groups**
- **Office Space Available - Easy in Easy out terms**

★ LOVELY MODERN OFFICES AVAILABLE NOW ★

All offices come with fast internet and natural light. some with lovely rural views. Ample car parking, easy walking distance from Bus Stop and Train Station. Competitively priced with easy in easy out tenancy.

For more information please call Lisa on 01304 842826

COMMUNITY GRANTS

Community Groups in Aylesham, Elvington, Tilmanstone, Betteshanger and Mill Hill Deal are invited to apply for grants from the Kent Coalfield Community Fund.

This money is available in partnership with The Coalfield Regeneration Trust.

For more information call Lisa on 01304 842826



Chartered Accountants and Chartered Tax Advisers providing Annual Statutory Accounts, Tax Returns, Payroll Services and VAT Returns to Individuals, Self Employed Businesses, Partnerships, Limited Companies and New Businesses

chris@brightaccountingsolutions.co.uk

0203 603 2304

www.brightaccountingsolutions.co.uk

3 Garrity House, Aylesham, CT3 3BF

PLANNING FOR PEACE OF MIND

Helping you to put in place:

- Estate Planning
- Bespoke Wills
- Lasting Powers of Attorney

I can help with applying for a *Grant of Probate* along with other related services

Please call for an appointment on



**01304
577998**

or email: info@slswillsandmore.co.uk

www.slswillsandmore.co.uk



Flooring and sanding specialists

Make an appointment to come into our Aylesham based showroom to view hundreds of different flooring options, including wood floors, vinyl tile and carpet. Or organise a home visit, we'll measure up and bring samples to you!



01304 806142

www.sdwebb.co.uk

info@sdwebb.co.uk



aylesham on foot

“AYLESHAM WALKIE TALKIES”

Meet every Wednesday at 4pm in the Market Square. We walk for about 1 hour, nothing strenuous. Everyone welcome.

Please find us on Facebook or call 07766 406 020 for more info.

AYLESHAM DOG WALKERS

Find us on Facebook - We meet every Saturday & Sunday at 11am by the show homes in Aylesham, and sometimes evenings during the week.

All shapes and sizes from new pups learning how to socialise to grumpy old pooches. Everyone is welcome.

We walk for about 1 hour, nothing strenuous. Everyone welcome.

ASPIRE HEALTH WALK

Get walking and join our small team on short 30 mins stroll, it's free simply turn up and join in

- 11am for 11.15am start

**Come to Bechange, Ackholt Road
- next to the Library.**



“...there are many pretty grasses”

Find your way to Ratling Road either by walking to the end of Cornwallis Avenue or, if you live in the new development, go across the field towards Timberwell.

■ Turn left and walk over the railway bridge and past the Ratling Social Club.

■ Take the waymarked footpath on your right just by Corby poultry farm.

■ Follow this path until it comes out by some cottages.

■ Take the footpath across fields on your right towards Listways cottages.

At this time of year there are many pretty grasses to be seen. Look out for the Teasles, see picture.

■ At the road (*Palm Tree Lane*) turn left. Walk along the road until you come to the next road on your right. Take this road (*Pinnars Hill*) towards Nonnington.

You will see a gate leading into Pinnars Farm on your left.

With Pride, not Prejudice

WALKING IN THE FOOTSTEPS OF JANE AUSTEN



JANE AUSTEN

- Take the path by the side of the gate. Walk along the track past the farmhouse.

- Exit the track through the pedestrian way onto the field.

- Bear right into the next field turn left and walk down the field keeping the hedge on your left until you reach the road (*Love Lane*).

- Turn left and continue walking along the road until you see a track on your right just past Bonnington Farm. Continue along the track until you see a kissing gate on your left.

This is the Serpentine Walk which the novelist Jane Austen used to walk when she visited the Goodnestone estate.

Apparently, she began her novel *Pride and Prejudice* immediately after a visit in 1796.

If you fancy a breather you could continue along the track towards Goodnestone village and either call in at the Old Dairy Café or walk a little further past the church and have a drink at the Fitzwalter Arms and return to the kissing gate.

- Through the kissing gate follow path through woodland until you come to another kissing gate. Walk across grass to another kissing gate at the other side of a gravel path.

- Go through the kissing gate and follow the path round until you see where the path forks to the right or straight ahead. Go straight ahead to another kissing gate. *Here you will find an information board about the woods and Jane Austen.*

- Go through the gate and turn left down a slope. At the bottom of the slope turn left and follow the path back to the road.

- Cross over the road and go down the road on the opposite side. Keep following this road until you come to a junction.

- Keep straight on until you are back in Aylesham.

If you want to make the walk longer you could walk all the Serpentine Walk by going through the gate immediately on your right as you turn up the track by Bonnington Farm.



Southern Water: A very private scandal

HOW have water companies gotten away with it for so long?

With the cost of living crisis biting hard, energy companies have been firmly in the news for a number of months now. Some energy firms have made big profits and shareholders have capitalised, whilst everyone else has struggled to pay their basic bills. But somehow, water companies have largely avoided criticism.

Southern Water and Affinity Water's combined bill increased in April 2021 and any changes this year will be shown in September's bill. However, the changes were nowhere near as high as expected as Southern Water state they needed to "make things right for our customers and the environment". Why so? Between 2010 and 2017, Southern Water failed to correctly report and comply with Environment Agency regulations over waste water treatment and were routinely releasing sewage into waterways across the county.

Disappointingly, this wasn't a one off: in 2007 Southern Water was fined £20.3m for deliberately misreporting performance statistics and subsequently increasing bills; in 2010 they were again fined for polluting a stretch of the Sussex coast; in 2011 a £25,000 fine was issued for a sewage spill into the Solent in Southampton; in 2014 Canterbury Crown Court found Southern Water guilty after untreated sewage was discharged in Swalecliffe Brook; and again in 2016 in Whitstable and Thanet which saw beaches closed, this time seeing them slapped with a £2m fine.

As Southern Water charges its customers for treating waste, and it failed to treat said waste on 6,971 occasions, it was ordered to repay customers by reducing bills through to 2025 as well as paying a hefty fine.

Sadly these incidents are still happening. This summer, Southern Water continued to spew raw sewage into seas and rivers in Kent and billing us for the privilege. People are swimming in the sea and sitting along beaches where dangerous amounts of waste are being dumped and consequently people are getting ill. It would seem they are open to the fines they receive whilst continuing to break the law in our name.

Affinity Water, who supply our fresh water, are performing slightly better. The industry has spent billions of pounds improving infrastructure since privatisation in 1989. However, leakages across the country still occur in huge volumes. Affinity Water narrowly missed its own target to reduce leakages by 11.1% (one of the best across the country incidentally), which in itself leaves a lot of room for improvement. All the while, bosses take home huge bonuses and shareholders are paid out handsome dividends. Countrywide, enough water is wasted daily to supply 20 million people, so it's understandable that support for re-nationalisation is high amongst the public.

Luckily for us in Aylesham, we've so far avoided a hosepipe ban, owing to the fact that our water comes from underground aquifers rather than rivers or reservoirs. The current environment secretary George Eustice MP called for all homes across Kent to have a hosepipe ban and so this doesn't mean we won't be destined for a ban in summers to come.

Water companies have invested billions of pounds in infrastructure, but funding has largely remained stagnant over the last three decades. And this funding has come from the pockets of customers: not shareholders as promised. The latest Census data shows Dover district has increased its number of households, and while the Dour area is managing its water reserves



CLEAN beaches protest

right now, stress on the system will only increase in the future. Water companies have paid out £18.9 billion to shareholders since 2010 whilst simultaneously taking out big loans to cover costs, and bills have risen steadily over the same period. According to a study by University of Greenwich experts, each household in Aylesham pays £37.90 a year directly into the pockets of shareholders from their bills.

The National Infrastructure Commission made some sensible suggestions to the water industry on preparing for the future: our summers will

only get hotter and drier. We need to cut leakage by a half (so Affinity Water's current target of 11.1% pales into insignificance), building new supply infrastructure (which is bad news for customers as investment comes from customers' bills increasing), and by reducing demand. We can each help out here by cutting our usage. In the UK, each person uses 141 litres per day compared to 115 litres per day in Belgium and Denmark.

It's likely then that costs will increase and bills will rise. When inflation is taken into account and once Southern Water stop refunding us for the misgivings, water bills could be significant and when energy prices are front and centre of media attention, these increases may go unnoticed. We will be asked to change our habits (rightly so) and we all must play our part.

Hopefully our water bills don't end up in a similar state to energy, but the writing's on the wall.

Do you have an idea for a story, or would you like to comment on what you've seen in the magazine? Write to us via email: ayleshamintouch@gmail.com

Neil Scrivener Stonemason



Neil Scrivener

Monumental Stonemason

kentstone@hotmail.co.uk

01304 820882 07970 810342

Ackholt Road, Aylesham CT3 3AJ

kentstonemason.co.uk



New Councillors Needed

Aylesham Parish Council currently have three vacancies and we are looking for new councillors to come and join us.

Are you passionate about your community?

Do you want to make a long-lasting change?

Do you have innovative ideas for the council?

Make a change and become a Councillor

Could you be a Councillor?

Any person 18 years of age and older, who is a local government elector, lives or works in the parish of Aylesham or lives within three miles of the area of the Local Council can be co-opted onto the Council. For further details and an application form please contact either Administrator Nicola Purcell at:

admin@ayleshampc.co.uk or Parish Clerk Kate

Robinson at clerk@ayleshampc.co.uk

Or visit our website at www.ayleshampc.co.uk

■ Come along to one of our meetings to see what goes on. We meet at 7pm, every second Tuesday of the month except in December, at Aylesham House, Dorman Avenue South.

On The Buses?

WHO'S to blame for the fact that we have so few bus services? This can be a little complicated, because funding and subsidies and obligations to run services involve a number of different bodies. Jon Flaig looks at the issues:

Stagecoach have run most of our local services since 1986 when all services outside London were deregulated by the government. This means not only that the buses are run by private companies, but that local authorities (KCC in our area) can't regulate those private companies.

If the local authority knows that a service is needed but which won't make money for the bus company, they can pay a bus company to run that service. As bus funding gets cut, it is more and more difficult for local authorities to pay for these extra 'socially necessary' routes - which is why we are losing so many vital bus services.

So, some bus routes are run for a profit by

Stagecoach (and some smaller companies), and others are subsidised by KCC as 'socially necessary'.

Long standing DDC Cllr Linda Keen, who is a Labour member, wrote to local MP Natalie Elphicke and KCC, stating: "Vulnerable people in these rural communities such as the elderly, schoolchildren, and the many residents without cars, rely on buses to get to work, schools, access medical services, shopping - the list is endless.

"One parent was told that, because of these cuts, her children, with particular educational needs, could have to change schools - despite the obvious disruption to their education. Basically - what is KCC and the Government going to do about this?"

Do you have an issue concerning the bus services in the area? Are the school buses providing what's needed for your family? Let us know, email ayleshamintouch@gmail.com



Watson & Bell Funeral Service

*Watson and Bell funeral service is an Independent family business
serving Aylesham and surrounding areas.*

*We pride ourselves on offering a personal, professional and
compassionate service to bereaved families.*

We offer a wide range of funerals at competitive prices.

We also offer a range of pre-paid funeral options.

For more information please don't hesitate to contact us on

0800 6444688 / 01304 840880
office@watsonandbell.co.uk

Unit 3
Aylesham Community Project
Ackholt Road
Aylesham CT3 3AJ



The Parish Council took the unusual, and many would say very welcome, step of agreeing a statement about local bus services, which we are very happy to print here

“IT is incredibly frustrating to hear that Stagecoach are making further cuts to the already abysmal bus services in the area. This comes after Kent County Council have cut £2.2m from their transport fund.

In April, KCC undertook a consultation on bus services which did not include any services in Aylesham. So the withdrawal of the 96A school bus, as well as many other services in and around Dover will have come as a massive shock.

Residents and bus users have been side-lined without a say. This will affect a huge range of people - particularly school children whose parents have just paid out huge sums for bus passes. One resident has been forced to move their child from Dover Christ Church Academy as they have no way of getting to school. This is incredibly chaotic timing and just plain unfair.

Aylesham Parish Council is disappointed with the decisions made by both Stagecoach and KCC and urge them to work together on a logical solution. Local councils should be improving public transport, not cutting services all together

Aylesham Parish Council, August 2022



Hetty's Florist & Gifts Aylesham

01304 755755 012277 686218

Fresh Flowers & Floral Arrangements
Available Now or Pre Order
Look out for our special promotions!

Now Open!

63 Cornwallis
Avenue, Aylesham,
CT3 3HG



The support you need, when you need it



DID YOU KNOW that Deal Area Foodbank also covers the Aylesham and neighbouring villages, offering support to local people who are struggling to make ends meet?

Now that summer is here and there are six glorious weeks of school holidays, we know that this can be one of the most stressful times for families.

With children constantly hungry, claiming to be bored and new school uniforms to purchase there is additional outlay that can change circumstances from just about coping to falling behind with payments and debt.

We also know, that with the current rise in cost of living, that it is not just families with school aged children that are struggling. We understand that people's financial situations are harder right now, not just those with children.

As the cost of living rises and budgets are stretched, unexpected costs, such as a broken appliance, a large utility bill or an increase in petrol for essential journeys, can push households into crisis and debt.

As well as supporting with food and essential household items, we may be able to help you, through the Household Support Fund, to meet some of these extra demands on your household budget.

If you need help you are not alone, we are here to give you the support you need. We help people in many different circumstances, you do not need to be on benefits, you may be working or retired, young or old. Whether you are living

alone, as a couple or in a larger family unit. Everyone's circumstances are different, and we will treat you with respect and kindness, we know how tough things are right now.

How to get help from us?

We are also working with our partners Bechange Community Hub who are based in Aylesham.



**Bechange Ackholt Road,
Aylesham CT3 3AJ**

Tel: 01304 840134 - Plenty of parking

You can give them a call on 01304 840134 or 07889 595426 between 9am and 5pm or call in to one of their drop-in sessions **Monday, Wednesday or Friday 10am -12pm.**

You can contact Deal Area Foodbank on 01304 728428 or 07926599439

If you don't get through straight away, please leave a message, someone will always get back to you



Fun all day at Bechange birthday bash

BECHANGE celebrated its 25th anniversary on one of the hottest days of the year, with a Community Funday.

Bechange have been providing support in the community since February 1997, and have evolved and adapted to the needs of the residents.

Set up originally to work with families, the project now provides a community hub with activities and support for all ages. They also give one-to-one support in a number of areas including assistances with applying for benefits and appealing decisions, looking for employment and getting work ready, form filling, housing, debt and financial issues and accessing the Foodbank.

The event was opened by the Aylesham Carnival Court, there were lots of fun activities including summer fayre favorites such as Hook a Fish, Tombola's, Lucky Dip and Facepainting. And the super-fun 'lil Jockey Ride-On animals.

Bruderhof provided rides on horse and carts. There were also good old fashioned sports day activities such as egg and spoon, obstacle and bean bag races.

There was a great Disco, and a chill-out tent provided by Camarados. The Arts Club brought along their Summer Exhibition, and the Knit and Natter group came along too.

The fund day was funded by the "Can Do" grant which followed on from the Chess Action Plan linked to the ASPIRE project that is delivered at Bechange Community Hub, following consultation with local people.

The ASPIRE project provided healthy food including fruit kebabs, and adults and children had fun making healthy drinks on the smoothy bike.



CARNIVAL ROYALTY try an ASPIRE fruit kebab

Dover Children Centre provided a Kids Corner - so thanks so much to them!

Angela, the manager at Bechange said: "It was wonderful to be able to put this event on during our 25th anniversary year.

"It has been a tough time for everyone and it was brilliant to be able to see people out and about and enjoying themselves.

"There were lots of people that helped make it as special day and businesses who donated prizes to for the tombola, lent us gazebos and groups that game along and performed for us.

"I would like to say a big thank you to all of the staff and volunteers who worked hard to make it a lovely event. Thank you also to the Workshop Trust for arranging for us to use the carpark and providing support on the day. Thanks too to the Carnival court for opening the event and the Majorettes for their brilliant display"

Angela said "It is important to our trustees and our staff to ensure that we meet the needs of the community. We are looking forward to a future where we continue to build on the success of the last 25 years."

BABY GROUP



OVER the spring and summer, Bechange have been providing activities for families with babies age two and under.

Baby Sign, funded by KCC Reconnect was delivered by Sarah Vaughan Natural Reflexions Holistic Therapies. Through the summer, Sarah delivered

a baby sensory taster session and will start a new course this term for parents and carers with children up to 2 years old.

The group is for babies and toddlers to explore their senses through a variety of play, songs and games. In addition Bechange Family Support Worker, Rachel, has been facilitating Baby Club sessions for parents and carers and their babies up to 6 months old, and these will be starting again on 9th September following a summer break.

Baby Club is a great place for people caring for new babies to come along and chat with other new carers in a relaxed and friendly atmosphere. There are also opportunities to talk to the team about topics such as breastfeeding, weaning and sleep.

PACKED LUNCHES

During the school summer holidays we provided children's packed lunches for children who live locally. The lunches included a healthy midday snack, designed to be eaten either at home or on the go.

Some families also attended our popular Friday "Lite Bites" community lunch. We also put on weekly activities so that the whole family could enjoy having fun learning and playing together. Activities included arts and crafts such as clay modelling, junk modelling, a cookery session as well as some good old fashion, hula hoops, skittles, board games and puzzles.

Manager Angela Doggett, said "We would like to thank the Phillip and Connie Phillip Foundation who have provided us with a grant for the packed lunch scheme and Waitrose in Canterbury for funding the family activities.

"We know that the family budget is being squeezed at the moment, so we hope that providing children with a nutritious lunch and some family fun has helped families over the summer"

The packed lunch scheme will be available again at half term, so any families with children aged 5 – 11 who feel they would benefit from this can contact us for further information.

AYLESHAM ARTS CLUB

Meets fortnightly at Bechange on Tuesdays. No experience necessary, no need to book. First session £2 and an easy membership scheme. Materials included.
Call 01304 840134 for dates
3.30pm - 5.00pm

COMMUNITY CATCH UP SESSIONS

Last Friday in everyone month
10am to 12pm:

Come and meet Dover District Council's Aylesham Community Development Officer and your Local Kent Police PCSO. Receive advice, discuss ideas or simply pop in to say hello over a cuppa.

KNIT AND NATTER

Love knitting, crochet or would love to learn?

Knit and snitch while you have a cuppa and chat with this friendly group.

THURSDAYS

10.30am - 12pm

Please ring 01304 840134 to book

The Bechange Weekly Diary

● MONDAY ●

DROP-IN SUPPORT & GUIDANCE

Our experienced team can offer assistance on a range of matters inc Benefits, Debt, Housing and Employment - **10am - 12pm**

ASPIRE grow your own

Learn more about gardening and the Aspire project - **10am - 2pm**

WELLBEING WALK

Get walking and join our small team on short 30 mins stroll, it's free simply turn up and join in

- **11.15am for 11.45am start**

NHS ONE YOU WEIGHT-LOSS

group sessions - please telephone and speak to Teela or a member of the ASPIRE team to book. **10am - 11am**

● TUESDAY ●

TOP UP TUESDAY

Every Tuesday morning, when available, surplus still good-to-eat food is dropped off by Waitrose.

9am - 12.30pm

SENSORY PLAY

for parents and carers and their babies to 2 year old. Two sessions aged 6 weeks to 1 year and 1 to 2 years. These groups are for babies and toddlers to explore and learn through a variety of play, song and games. **Please contact us for more information**

GROWING YOUR OWN

- learn more about gardening and the Aspire project - **10am - 2pm**

EMPLOYABILITY SESSIONS

plenty of support to get you started, gain skills and move towards employment **12pm - 2.15pm** call 01304 840134 and speak to the Aspire team about joining this group

HEALTHY EATING COOKERY COURSE

10.30am to 1pm

Learn to cook healthy meals. Please ring to book your place must be over 18. Please contact for further information.

● WEDNESDAY ●

LITTLE GREEN FINGERS

Join in our garden-based activities with a light snack included. Parental supervision required. Call Bechange to book your place - 01304 840134

1pm - 2.30pm

DROP-IN SUPPORT & GUIDANCE

Our experienced team can offer assistance on a range of matters inc Benefits, Debt, Housing and Employment - **10am - 12pm**

LIFESTYLE 1:1 SUPPORT

with NHS OneYou - **9am - 3pm**

phone and speak to the Aspire team for information

LBT - LEGS, BUMS & TUMS

is it time for a new you in the New Year? Join our FREE legs, bums & tums sessions with a weight loss drop in straight after your class. Ring 01304 840134 for more info or to book a place.

9.30am - 10.30am

GROWING YOUR OWN

- learn more about gardening and the Aspire project - **10am - 2pm**

NHS ONE YOU WEIGHT-LOSS GROUP

2.45pm - 3.15pm

HEALTHY EATING COOKERY COURSE

10.30am to 1pm

Learn to cook healthy meals. Please ring to book your place must be over 18. Please contact for further information.

● THURSDAY ●

GROWING YOUR OWN

Learn more about gardening and the Aspire project - **10am - 2pm**

NATURE AND WELLBEING COURSE

10am - 12pm phone and speak to the ASPIRE team for more information.

KNIT AND NATTER

Love knitting, crochet or would love to learn? Knit and snitch while you have a cuppa and chat with this friendly group.

Please ring 01304 840134 to book - **10.30am - 12pm**

GAMES & PASTIMES

- (Bridge) All welcome from beginners to experienced players- **10.30am - 1pm**

LIFESTYLE 1:1 SUPPORT

with NHS OneYou - **9am - 1pm** phone and speak to the Aspire team for information

● FRIDAY ●

LIFESTYLE 1:1 SUPPORT

with NHS OneYou - **9am - 3pm**

phone and speak to the Aspire team for information

BABY CLUB

This group is for parents/careers and their babies up to age 6 months. Come and meet other parents/careers in a relaxed environment.

Call Bechange to book a place - 01304 840134 **9.30am - 11.30am**

FARESHARE FRIDAY

We work closely with Fareshare and Tesco Supermarket to redistribute surplus food that can still be used. This is available for people to pick up at our hub on Friday Morning.

9.30am - 12.30pm

DROP-IN SUPPORT & GUIDANCE

Our experienced team can offer assistance on a range of matters inc Benefits, Debt, Housing and Employment - **10am - 12pm**

CAMERADOS PUBLIC LIVING ROOM

Come and join us in a public living room, a no agenda space, be yourself alongside others, a warm & welcoming place where you can just sit and chat to other people - No need to book **10am - 12pm**

"LITE BITE" LUNCH

- **12.30pm - 2pm** Starting in March Open to all members of the community and there is no set price, pay what you can afford. No need to book but places are limited. last orders 1.30pm.

LIFESTYLE 1:1 SUPPORT

with NHS OneYou - **9am - 1pm**

phone and speak to the Aspire team for information

GROWING YOUR OWN

- learn more about gardening and the Aspire project - **10am - 2pm**

SOMETIMES SESSIONS HAVE TO BE MOVED OR CANCELLED. TO AVOID DISAPPOINTMENT PLEASE PHONE AHEAD TO CONFIRM



Giving you the power to improve your health, wellbeing and job prospects

ASPIRE East Kent provides a **FREE** friendly programme for people who want to improve their health and employment opportunities and to feel more confident and positive about life. A wide range of activities includes cooking, gardening, wellbeing and exercise sessions, accredited courses, 1-2-1 advice on employment and from NHS One You health and weight loss advisors.

ASPIRE is for you if:

- you are aged 18-65 and live in East Kent
- you are either unemployed, a job-seeker, in temporary/insecure work or on a zero-hours contract
- you would like to improve your health and wellbeing.

Contact our team today and find out how ASPIRE can help you

aspire@bechange.org.uk 01304 840134

or find us on social media:

Web: <https://bechange.org.uk/about-aspire/> Facebook: [AspireProjectEastKent](#)

Bumper Harvest at Aspire Community Garden

The long hot summer has led to a bumper crop of fresh vegetables in the ASPIRE Community Garden at Bechange this year.

WATERING WELL

Rachel, Stephen, Sandro and the team of ASPIRE garden volunteers have had a lot to do to keep the plants well-watered, but the community garden has been more productive than ever this year, with all of the fresh vegetables being put to good use.

FROM FIELD TO FORK

Maria, who co-ordinates the ASPIRE cooking classes has made the most of the ongoing harvest of tomatoes, potatoes, chillies, peppers, mixed leaves and other veg, with a range of very tasty dishes including vegetable moussakas, tray bakes and salads.

Visitors to the Bechange Anniversary Open Day on 13 August were able to sample pakoras and samosas using courgettes and aubergines grown by ASPIRE participants and volunteers.

COMMUNITY GARDENING

- COMMUNITY FOOD

Stephen has been preparing small bags of fresh produce from the garden to offer at the Bechange Community Lunches on Fridays – all produced using organic principles, with no air miles and carefully tended over the summer by ASPIRE staff and volunteers.

These typically include cucumbers, tomatoes, chard, kale and early apples. Small donations are welcome, but the aim is to show what is possible – and to encourage others to get involved.

MIND AND BODY

Elsewhere in the garden, the ASPIRE Nature for Wellbeing sessions will be restarting soon. Sarah and Egle will be holding a new series of outdoor mindfulness and craft activities which take inspiration from our community garden and the natural world.

Laura will also be bringing in a new schedule of gentle exercise classes to help tone 'Legs Bums and Tums' while Teela and Karen from the NHS One You Team are on hand to provide 1:1 support for people who want to lose weight.

If getting a job or starting your own business is your goal, ASPIRE participants can also book a session with Elaine and Fi to help with CVs, interview techniques and IT literacy, improving confidence and skills for employment.

Find out More:

ASPIRE East Kent provides free friendly workshops for people who want to improve their health and employment opportunities. If you'd like to join the project, volunteer, or just want to know more, please get in touch to have a chat with one of our team.

Call 01304 840134 or email aspire@bechange.org.uk

Check out our webpage and social media to see what we're up to!

Web:

<https://bechange.org.uk/about-aspire/>

Facebook:

[AspireProjectEastKent](#)

AYLESHAM'S Arts Club has been going for over a year now, and we decided to go on a trip to the area's largest art gallery – the Turner Contemporary in Margate.

We walked into the lobby/gift shop full of books and prints – the art experience started with some interesting sculptures, made from card and other materials, pretty sure some old stools were used too. The light through the huge glass window changed the shadow play as we walked around the exhibit then a huge 30ft canvas came into full view – something so big has an impact even before seeing the image.

The children's gallery was amazing with such a vast array of works from detailed paintings to childish handprints, some were very moving and the concepts behind the pictures were emotional.

The main exhibits were interesting, kinetic sculptures with human body like movements – the rope based figure reminded me of trying to get up from a camping chair, I could hear the groaning in my ears.

The little white sail boats on sticks were described as “cute” and interestingly, it was only after being informed by an attendant that each boat was in fact a *ceramic* figure – and there was I thinking they were just paper napkins!

The photography between the different galleries was enjoyable with portraits and flowers the main subjects. The east gallery was filled with four huge hanging images of what looked like rock formations, impressively big – 2x3 metres at least!

Some of the photography on display resonated with the tonal feel from our heritage mining project with the stark contrast and grainy texture; also, the way these images were displayed on simple boards with no frames added to the rawness of the images.

After an hour or so it was time for a break and some tea, the café has tasty treats, but it doesn't come cheap – emphasis on treat!



CONTEMPORARY art at the Turner

After our break, a walk around Margate's old town – and taking in the architecture of possibly Englan's first seaside resort. And of course the sea and coastal views. There really is nothing like the smell of the sea (it was low tide that day and the smell was a little extra powerful!).

The gallery offers everything you need for a great day out - paper, pencils, and folding stools to draw and sketch as you please. Wheelchairs can be booked too and there is a huge lift to take you up and down and very helpful staff. Outside there is Blue Badge parking, and general space for cars is far less expensive than other towns.

Keep an eye on Aylesham Arts Club facebook page for upcoming events and dates.

ONE CALL ELECTRICAL

SERVICES LTD

24^{HR}
CALL OUT SERVICE



01304 841537 07517 607888

www.onecallelectricalservices.com

Email: alan@onecallelectricalservices.com

**Emergency Electrician
any Day or Night
Available 24 hours**

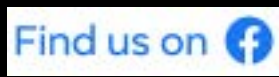
All kinds of electrical work undertaken

No job too small

All work insured and certificates issued

- Light Fittings
- Replacement Sockets
- Electrical Installations
- Complete Re-wires
- Electrical supplies
- 24hr Emergency Call Out
- Fully Qualified Engineers

NICEIC
Approved
Contractor
'Trust Mark' Member
Fully Part P
Registered



VILLAGE GUIDE

LOCAL AUTHORITIES

■ AYLESHAM PARISH COUNCIL

Aylesham House, Dorman Avenue South,
Aylesham CT3 3AD

Parish Clerk & RFO Kate Robinson

clerk@ayleshampc.co.uk
07830 312500

Assistant Clerk Demi Jenkins

assistantclerk@ayleshampc.co.uk
07897 593030

Administrator Nicola Purcell

admin@ayleshampc.co.uk
07830 353872

Monday, Tuesday & Thursday's 09.00-15.00

Website: www.ayleshampc.co.uk

■ YOUR DISTRICT COUNCILLORS

Aylesham and Snowdown form part of Dover District Council's ward of Aylesham, Eythorne and Shepherdswell, represented by three councillors.

They are:

Cllr Linda Keen, Labour,

01227 830790

cldr-linda.keen@dover.gov.uk

Cllr Peter Walker, Independent,

07768 106009

cldr-peter.walker@dover.gov.uk

Cllr Charles Woodgate, Labour,

07427 517498

cldr-charles.woodgate@dover.gov.uk

Further details about their individual council responsibilities can be viewed on the Dover District Council website www.dover.gov.uk

CHURCHES

■ AYLESHAM BAPTIST CHURCH

Dorman Avenue South CT3 3AA

- Sunday Services 10.30am

- Renew61 - A shared space where it's ok to not be ok - Mondays 10am - 12

Contact - ayleshambaptist@gmail.com

find us on facebook search 'Aylesham Baptist'

www.ayleshambaptistfreechurch.co.uk

■ ST PETER'S CHURCH

We are the Parish church of St Peter's Aylesham in the Church of England. Our hall is available for private hire. Phone: 07535 999482.

Facebook: [stpetersaylesham](https://www.facebook.com/stpetersaylesham)

Email: stpetersaylesham@gmail.com

Web: www.stpetersaylesham.co.uk

Dorman Avenue North CT3 3BL

Email: stpetersaylesham@gmail.com

■ ST FINBARR'S CATHOLIC CHURCH

Market Place, Aylesham CT3 3EZ

Phone: 01304 206766

HEALTH SERVICES

■ AYLESHAM MEDICAL PRACTICE

Aylesham Health Centre, Queens Rd, Aylesham, Canterbury CT3 3BB

Phone: 01304 840415

■ AYLESHAM HEALTH CENTRE

Queens Rd, Aylesham, Canterbury CT3 3BB
01304 843783

COMMUNITY GROUPS

■ BECHANGE COMMUNITY HUB

At Bechange Community Hub we pride ourselves on our friendly approach and expertise in a wide range of support needs; from Benefits such as universal credit, PIP, DLA and Attendance Allowance, to Housing, Family Matters, Finances and Employment.

Our Support Team can work with you every step of the way, no matter how long or short your support journey. Not sure if your needs fit our support criteria? Get in touch to find out.

We offer Drop-In sessions Monday, Wednesday and Friday 10am-12pm. Or you can contact us by telephoning 01304 840134 with an enquiry, to make an enquiry or referral.

Tel: 01304 840134 enquiries@bechange.org.uk

■ FOODBANK

If making ends meet is hard for you at the moment, you may be able to get food and household goods from the Foodbank. Please contact Bechange on 01304 840134 or call in at one of their drop-in sessions if you need help.

VILLAGE GUIDE

■ AYLESHAM HUB

Community Co-Operative
ayleshamhub@gmail.com

■ ADCWT - WORKSHOP TRUST

Ackholt Road, Aylesham CT3 3AJ
Tel: 01304 842826

■ AYLESHAM MAJORETTES

We are the local Majorette and take part in carnivals, fetes and do displays of what to show off our talent
Email: ayleshammajorettes@hotmail.com
Mob: 07709314680

■ AYLESHAM WELFARE LEISURE CENTRE

Spinney Ln, Aylesham, Canterbury CT3 3BE:
Phone: 01304 840661

■ INVICTA COMMUNITY & LEISURE

Aylesham Welfare Leisure Centre, Spinney Lane,
Aylesham, CT3 3BE
Phone Number: 01795537321
Email c.rowe@westfavershamca.org

SCHOOLS & LIBRARY

■ AYLESHAM LIBRARY

Ackholt Road
03000 413131

■ AYLESHAM PRIMARY SCHOOL

Address: Attlee Ave, CT3 3BS
Phone: 01304 840392

■ ST JOSEPH'S CATHOLIC PRIMARY SCH

Ackholt Road, CT3 3AS
Email: office@st-josephs-aylesham.kcsp.org
Phone: 01304 840370
Web: stjosephs-aylesham.co.uk
Facebook: STJOSAYLESHAM
Twitter: @stjosephsaya

COMMERCIAL

■ AYLESHAM BUSINESS NETWORK

Local businesses supporting each other and the community in Aylesham District. Please contact our chair, Sara Sheppard, on 07951 736021 for more information.

www.ayleshambusinessnetwork.co.uk or follow us on
Facebook: AyleshamBusinessNetwork

■ AYLESHAM POST OFFICE

Market Pl, Aylesham, Canterbury CT3 3DZ
Phone: 01304 840457

■ AYLESHAM HOME & PET STORE

66 Market Place, Aylesham CT3 3DZ
Phone: 01304 447767

■ BRIGHT ACCOUNTING SOLUTIONS

Chartered Accountants 0203 603 2304
3 Garrity House, Aylesham, CT3 3BF

■ MANSE DESIGNS LTD

Architectural Services. We are able to offer services for both Planning and Building Regulations. Advice on your permitted development rights and planning permission. www.mansedesigns.co.uk
Tel: 07568 067802 Email: keith@mansedesigns.co.uk

■ MACS CARS

PRIVATE HIRE - 07594 998 468

■ NAJ INDIAN TAKEAWAY

Open 6 days a week: Tue-Sun 5pm to 10pm
01304 840 216. 10 Market Place, Aylesham,
Canterbury CT3 3EY www.najtakeaway.co.uk

■ NEIL SCRIVENER STONEMASON

Ackholt Road, Aylesham CT3 3AJ 01304 820882

■ SLIMMING WORLD WITH CLARE

Tuesdays 4:30pm & 6:00pm
St Peters Church - Aylesham
Call/Text: Clare on 07884 123 407

■ SLS WILLS AND MORE LIMITED

Estate Planning Consultant, helping you to put in place bespoke Wills, Lasting Powers of Attorney and can also help with applying for a Grant of Probate along with other related services. For more information, please visit
www.slswillsandmore.co.uk

Please call for an appointment on 01304 577998, or email info@slswillsandmore.co.uk

■ DENISE CALDWELL HAIR AND BEAUTY

Unit 1 Ackholt Road, Aylesham CT3 3A
01304 842034

■ BE WISE GAS AND PLUMBING

Call now for a quote 07944 022043

■ TFP SEWING STUDIO

3 Aylesham Business Park, Ackholt Road, Aylesham CT3 3AJ
Tel: 07424 807439

■ ONE CALL ELECTRICAL

24 hour service. Tel: 01304 841537 or 07517 607888

■ WATSON & BELL

Funeral services.63 Cornwallis Ave, Aylesham CT3 3HG Tel
01304 840880

■ SHAUNA OLIVIA STUDIOS

For more information please visit www.shaunaoliviastudiosuk.co.uk or contact
shaunaoliviastudiosuk@outlook.com,
07526851963

■ RURAL REPAIRS

www.ruralrepairs.com We are a Computer repairs, service And also Sewing alterations service Based in Elvington 07910975248

■ S D WEBB

Flooring and sanding specialists. 01304 806142
www.sdwebb.co.uk info@sdwebb.co.uk

+++ HELPLINES +++ HELPLINES

AYLESHAM IN TOUCH reproduces here a list of useful contacts for families and individuals facing difficult circumstances. Let us know if we have any details incorrect and we will change them in future editions.

OLDER PEOPLE'S SERVICES

CARERS SUPPORT EAST KENT

CSEK are operational and the Hub team is still offering information and guidance and assessment for Carers.

Open Mon, Weds and Fri 8:30am-6pm

Tues and Thurs 9am-5pm

0300 302 0178

SILVERLINE BEFRIENDING SERVICE

Helpline and friendship service for people aged 55 – 24 Hour befriending service.

Free, confidential service to share worries and fears.

0800 470 80 90

AGE UK

Advice line 0800 169 6565

BRIGHT SHADOW

Support for people with dementia and their families

01227 467 272

zest@brightshadow.org.uk

DEMENTIA CONNECT SUPPORT LINE

Hosted by Alzheimer's Society Information, advice and support for people living with dementia and their families.

0333 150 3456

KENT DEMENTIA HELPLINE

Practical and emotional support

0800 500 3014

CINNAMON TRUST

Dog-walking

For help with dog-walking for elderly isolated people.

01736 757 900

www.cinnamon.org.uk

PHYSICAL & MENTAL HEALTH ASPIRATIONS

Free service for unemployed people aged over 25 living in Kent who feel their mental health is holding them back. 0333 880 2730

SAFE HAVENS

Friendly support available to anyone over the age of 16 across Kent and Medway. Available between 6pm - 11pm and 365 days a year.

www.kmpt.nhs.uk/safehavenskentmedway

NHS KENT & MEDWAY

If you are known to KMPT or need urgent mental health support, advice and guidance call the 24 hour helpline.

0300 222 0123

LIVE WELL KENT

Still accepting referrals - if you need support or need to refer someone you can call the referral line or email. Free service for anyone over 17

0800 567 7699

info@livewellkent.org.uk

livewellkent.org.uk/

MENTAL HEALTH MATTERS

24/7 helpline providing emotional support, advice and guidance.

0800 107 0160

SAMARITANS

24/7 free helpline

Dedicated to reducing feelings of isolation. A safe place to talk to trained counsellors about whatever is troubling you. 116 123

SANELINE

SANE provides emotional support, guidance and information to anyone affected by mental illness, including families, friends and carers.

Call and leave a message with your name and number on: 07984 967 708 Someone will call back as soon as practicable.

support@sane.org.uk

Mental health support for veterans and their families

0800 138 1619

combatstress.org.uk

DADS UNLIMITED

Provides practical advice, support and guidance for dads going through emotional issues around separation, divorce and access to children. 1:1

support is being provided virtually

www.dadsunltd.org.uk 01233 680150

KCC

Resources to support families to cope with bereavement and grief.

www.kent.gov.uk/wellbeingfamilies

Dover Counselling Services

NHS adult psychological therapy services

Call to self-refer and they will assess eligibility.

01304 204123

<https://dovercc.org.uk/>

+++ HELPLINES +++

**HELP IN THE
COST OF
LIVING
CRISIS
£££**

BEFRIENDING

Phone a Community Friend

A free phone call service – an opportunity to chat to like-minded local people. Need to go online and complete an easy form and someone will be in touch within 24 hours.

(Organised by Kent Equality Cohesion Council and Cohesion Plus)

www.kentecce.org.uk/phone-a-community-friend/

CARER SUPPORT AND SPECIAL NEEDS

THE FAMILY FUND

Grants to help low-income families with seriously ill or disabled children with the cost of equipment, goods or services. E.g. domestic appliances; sensory or educational equipment that they might not otherwise be able to afford

For further information and to apply for a grant visit:

www.familyfund.org.uk

01904 550055

DISK

(Disability Information Services Kent)

Free confidential specialist information for people with a disability, older people and carers

07743 177581

LOOK AHEAD

Support for learning disabilities, mental health, homelessness and young people

CherylRisley@lookahead.org.uk

ClareVale@lookahead.org.uk johnpender@lookahead.org.uk

lookahead.org.uk

EAST KENT MENCAP

www.eastkentmencap.co.uk

CARERS SUPPORT EAST KENT

Information and guidance and assessment for carers.

0300 302 0178

Open: Open Mon, Weds and Fri 8:30am–6pm

Tues and Thurs 9am–5pm

KENT AUTISTIC TRUST

Provide personalised and specific support for people with autism

01634 405168

www.kentautistic.com

BENEFITS, JOBS & DEBT

Citizens Advice Bureau

For help 03448 487978

General enquiries 01304 374333

For debt enquiries 01304 202442

For Universal Credit enquiries 01304 202030

ALL 9.30am - 4.30pm

doverdealadvice.co.uk

Family Lives

Charity supporting vulnerable and lower-income families

Free helpline 0808 800 2222

askus@familylives.org.uk

JOB CENTRE (DWP)

For DWP advice call this number.

01304 866190

MONEY ADVICE SERVICE

For advice regarding finances and debt

0300 500 5000

www.moneyadviceservice.org.uk

NATIONAL DEBT LINE

Advice hub for money worries

0808 808 4000

www.nationaldebtlive.org

STEP CHANGE

Free debt advice online or over the phone

0800 138 1111

www.stepchange.org

PRIORITY SERVICES REGISTER

(for customers of utility companies including Affinity and Southern Water)

For help in a utility emergency, Sign up for free

For those with chronic illness, have medical support

at home, refrigerated medication, dementia, a

disability, pensionable age, children under 5,

suffering a bereavement.

Southeastwater.co.uk/priority

We believe the above information to be correct at the time of going to press.

Sadly MARTIN LEWIS has had to stop supplying copy to not-for-profit publications due to the heavy workload he has now with the current crisis.

■ **FOODBANK** If making ends meet is hard for you at the moment, you may be able to get food and household goods from the Foodbank. Please contact Bechange on 01304 840134 or call in at one of their drop-in sessions if you need help.

WE ARE AYLESHAM

Past & Present

FRIDAY 16 SEPTEMBER

A FREE LOCAL HISTORY EVENT



AYLESHAM
District Community
Workshop Trust



Aylesham Hub

platform films

AYLESHAM
IN TOUCH

From 3

- Our Village
village from
- A Village f
hundred year
And what els
- “Do you sp
and accent yo
David Horns
- Kid’s TV –
PLUS family

From 7

Film Pr

comprising
reflecting li
past. Introd

Througho

will be open

The **Ayles**
on display. Pl
Aylesham A

3pm-6pm • Family Time:

The Story – find out about the people who built the village from 1927 till today – and help make a new village map!
For Miners & Makers – why was coal so important a century ago that families came hundreds of miles to Kent? How was the village made in the village over four generations?
Speak Aylesham? – find out about the special words you will only find in our village, in a fun talk by Prof. [Name] by.

Watch some classic TV from the 70s & 80s in our TV corner
and activities, with crafting, badge making and more!

7pm to 8.30 • Film time:

Premiere **‘WE ARE AYLESHAM’**

A new archive film *and* footage shot this year, featuring life in the coalfield villages and struggles of the 1930s. Produced by Chris Reeves of Platform Films.

About the event: The Old School Canteen will be open for refreshments and a local speciality: **‘Pit Pasty’**.

Aylesham Heritage Centre will have an exhibition on the coalfield. Platform Films will be interviewing for a new film. And the **Sports Club** and others will be along too.



Village History

Free **EVENT 2022**

AFTER SCHOOL
activities
for kids

**"DO YOU SPEAK
AYLESHAM?"**
with David Hornsby

**OLD SCHOOL
CANTEEN**
open throughout

**HISTORY BEHIND
OUR STREET
NAMES**

**AYLESHAM
HERITAGE GROUP
EXHIBITION**

Premier:
New village film:
We Are Aylesham

Plus Retro Sweet Shop & TV lounge; Arts Club show;
Crafts and activities; try a Snowdown Pit Pasty ...
and more, *see over*

Friday 16 Sept

at the **Workshop Trust**

Ackholt Road CT3 3AJ

from 3pm to 9pm
(evening event at 7pm)

**TURN PAGE
FOR EVENT
DETAILS**