

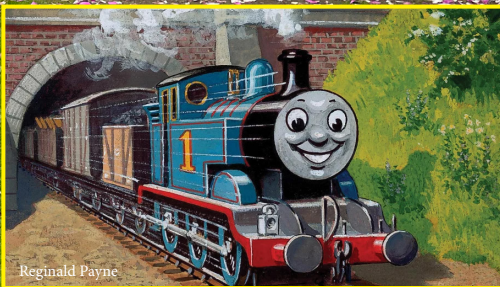
# AYLESHAM

*Early Spring Special*

**IN TOUCH**



*Inside: Spring Events in Aylesham*



**Thomas comes steaming in** *pages 6 & 7*



**Bechange  
Community  
Hub has a  
Busy  
Timetable**  
*pages 4 & 5*

**The support you  
need, when you  
need it from**



# **YOUR FOODBANK**

**DEAL AREA FOODBANK  
also covers AYLESHAM and  
neighbouring villages, offering  
support to local people who are  
struggling to make ends meet.**

We also know, that with the current rise in cost of living, that it is not just families with school aged children that are struggling. We understand that people's financial situations are harder right now, not just those with children.

As the cost of living rises and budgets are stretched, unexpected costs, such as a broken appliance, a large utility bill or an increase in petrol for essential journeys, can push households into crisis and debt.

**As well as supporting with food and essential household items, we may be able to help you, through the Household Support Fund, to meet some of these extra demands on your household budget.**

If you need help you are not alone, we are here to give you the support you need. We help people in many different circumstances, you do not need to be on benefits, you may be working or

retired, young or old. Whether you are living alone, as a couple or in a larger family unit. Everyone's circumstances are different, and we will treat you with respect and kindness, we know how tough things are right now.

## **How to get help from us:**

We are working with our partners Bechange Community Hub who are based in Aylesham.



**Bechange, Ackholt Road,  
Aylesham CT3 3AJ**

**Tel: 01304 840134**

You can give them a call on **01304 840134 or 07889 595426** between 9am and 5pm or call in to one of their drop-in sessions **Monday, Wednesday or Friday 10am -12pm.**

You can also contact Deal Area Foodbank on **01304 728428 or 07926599439**

*If you don't get through straight away, please leave a message, someone will always get back to you*





COMING  
SOON

## THE OLD SCHOOL COFFEE SHOP & KITCHEN

Work continues on the refurbishment of the space that will become the new coffee shop and kitchen, which is being funded by a £40,000 grant from the Rural England Prosperity Fund allocated by Dover District Council (DDC).

A team from Mears has been working hard to bring the space to life and SD Webb Flooring in Aylesham has been able to save and bring the original wooden floor back to its original glory.

It had been buried for years beneath layers of glue and vinyl and seemed to be damaged beyond repair until it was cleaned up.

There will be a full update on the opening of the new cafe inn the next edition of Aylesham In Touch magazine - coming to your letterbox in March.

★ **CO-WORKING COMES TO AYLESHAM.** Thanks to £1,600 funding from DDC, a new co-working space is being launched in which people can rent a desk or room by the hour or day.

### Making Access Easier

Work is being starting to open a new pedestrian entrance leading from the direction of the railway station, making access to the site easier by foot.



**CLEARING UP:** a new access way into the ACT site



**BLANK CANVAS:** a complete re-decoration with thanks to MEARS and the Trust team

### The Future is Bright

★ A £50,000 grant from the VCSE Energy Efficiency Scheme, led by the Department for Culture, Media and Sport, has been used to upgrade the lighting across the Old School buildings to make it more efficient and cost-effective.

Emily Barnes, CEO of ACT, said: "This benefits other site users such as East Kent College: Aylesham, Aylesham Library and the Bechange Community Hub.

"This work makes us more environmentally sustainable and helps to reduce the amount of energy we all use to light the buildings and site. It will mean that, we can direct resources towards our charitable aims of supporting the local community and improving local access to employment and training opportunities."

The work was carried out by Aylesham company One Call Electrical Services.

**To keep updated with everything happening at the Trust see the new website: [aylesham.org.uk](http://aylesham.org.uk)**

The next edition of **Aylesham In Touch** magazine will be out in March and delivered to every letterbox in Aylesham and rural villages  
Email us at [ayleshamintouch@gmail.com](mailto:ayleshamintouch@gmail.com)



**Bechange, Ackholt  
Road, CT3 3AJ  
01304 840134**

## **CAMERADOS**

Public Living Room  
Tue • Wed • Thu • Fri  
09.30am – 12.00pm

## **MEMORY CAFE**

(4th Tuesday of the  
month) 1.30pm –  
3.30pm

## **BREAKFAST**

funded by DDC **Free**  
Tue • Wed • Thu • Fri  
10.00am – 12.00pm

## **Thanet Trust – New Beginnings**

12th & 13th March  
19th & 20th March  
26th & 27th March

*New Beginnings is aimed at  
those who have never worked,  
and those who have not worked  
for some time. It provides some  
entry-level qualifications, a CV  
session.*

**This course is set over 6 days,  
for 3 weeks**

Emergency First Aid – 1 day  
Health and Safety – 1 day  
Fire Safety – Half day  
Working at Height – Half day  
Manual Handling – Half day  
COSH – Half day  
Day 6 is then the CV session  
and a small celebration of  
achievement, where learners get  
presented with certificates etc.

### **BOOKING DETAILS**

**TO FOLLOW  
01304 840134**

**BECHANGE**  
supporting positive futures

**BECHANGE**  
would like to invite you to our new

# **LEGO CLUB**

**TIME: 10.00AM – 11.30AM**

**THE LAST SATURDAY OF  
EVERY MONTH STARTING  
22ND FEBRUARY 25**

Families and children of all ages  
are welcome,  
but please note that all children  
should be supervised by an adult

Bechange  
Ackholt Road  
Aylesham  
CT3 3AJ  
Tel: 01304 840134

Made with PosterMyWall.com

**BECHANGE**  
supporting positive futures

**Bechange is excited to invite you to our  
special evening Fundraising event.**

**BACK BY POPULAR DEMAND**

# **VINYL COVERS**

**Tickets £5.00pp**

**21st March 25**

**doors open at 7.00pm**

American supper – so bring along a plate of  
food and drink

**PLEASE RING 01304 840134 TO BOOK**

*Let's party, together!*

Made with PosterMyWall.com

**BECHANGE**

# **Spring CRAFT FAIR**

**HANDMADE CRAFTS  
EASTER GOODIES  
GIFT STALLS  
REFRESHMENTS**

**Free Entry**

**SATURDAY 12th APRIL**

**10.00am – 1.00pm**

For info on booking a table, contact  
[lesley.farbrace@bechange.org.uk](mailto:lesley.farbrace@bechange.org.uk)

Made with PosterMyWall.com



# Bechange Community Notice Board

## MONDAY Pilates

10am - 11am

£3.00  
per week

## MONDAY Drop In (Benefits, Housing Advice)

FREE  
10am - 12pm

## TUESDAY One Stop Shop: Domestic Abuse Help Line FREE

10am - 12pm

## TUESDAY Arts Club 2pm - 4pm FREE

## WEDNESDAY Sewing Group 10am - 12pm 50p

## WEDNESDAY Drop In (Benefits, Housing Advice) FREE

10am - 12pm

## WEDNESDAY Pilates 12.30pm - 1.30pm £3.00 per week

## THURSDAY Knit & Natter 10am - 12pm 20p

## THURSDAY Hoe, Sow & Grow 12.30pm - 3.30pm FREE

## FRIDAY Baby Club 09.30am - 11.30am FREE

## FRIDAY "Just Craftin" 10am - 12pm FREE

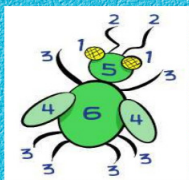
## FRIDAY Drop In (Benefit, Housing Advice) FREE 10am - 12pm

## FRIDAY Shed Project 9.30 - 12.30 FREE

## FRIDAY Lite Bites Community Lunch 12.30pm - 2.00pm £2.50 min donation

This is our usual weekly timetable. Call ahead if you want to confirm or for more information **01304 840134**

## BEETLE DRIVE JOIN US AT BECHANGE FOR A FUN AND EXCITING FUNDRAISER EVENT



**Tuesday  
25th  
February  
5.30pm start**



**Entry  
Price  
£4.00 per  
person**

**Your ticket includes a choice of soup, roll,  
and choice of refreshments**

**ENJOY AN EVENING OF LAUGHTER AND  
FRIENDLY COMPETITION  
Family Friendly**



Bechange presents



## CHARITY QUIZ NIGHT

**FRIDAY  
9TH MAY**

Bechange  
Doors open at 6.00pm  
quiz starts at 7.00pm

**£5**

per person. Teams  
of 6 - Not got a  
team, Don't worry  
we can find you a  
quizzing table

**Bring your own nibbles &  
drinks**

Ring **01304 840134** to Book

[www.bechange.org.uk](http://www.bechange.org.uk)



## Rush to join in signals more space for model railway exhibition

So many exhibitors have been lining up to take part in Aylesham's first ever model railway exhibition which takes place in March that extra space has been hired to include them all.

Pitches in Aylesham Community Trust's main hall and adjoining community room were soon snapped up by modellers wanting to display their layouts for the event on Saturday 8 March and now the hall in Bechange, a charity which shares

the site with the trust, has also been hired. In all up to 16 exhibitors are expected to attend along with half a dozen specialist traders.

The exhibition is being held as a fundraiser by the Whitstable based East Kent Model Railway Society. Its Chairman Nick Evans said: "We are delighted with the response from so many people keen to show off their model railways.

"Having this many exhibitors means we can offer an excellent show which will capture the interest of our visitors. We hope the event will prove inspirational and exciting for people, whether they are novices or experts in the pastime.

"Today's model trains can involve some sophisticated electronics designed to bring greater realism to a layout but, for many people, they also bring back childhood memories of playing with toy trains in the loft or on the bedroom carpet."

Entrances to both the community trust building and







Bechange are just a few yards apart, on opposite sides of the site's free car park. Dover Transport Museum is due to bring one of its vehicles to the event and will be selling raffle tickets to win a classic motorbike.

Among the layouts will be one inspired by the wedding of Clare Deary and Luke Harmer in 2023. Clare, formerly from Aylesham, and Luke both work for Southeastern Railway and they hit upon the idea of having a train running around their wedding cake at their reception. The idea evolved though and Luke's dad Jeff ended building a five feet long layout to go beside the cake called Travelling To Wedded Bliss.

Probably the largest exhibit at the event will be the 19 feet long Swanage layout. Built by EKMRS member Paul Edwards, it has become a popular feature on the exhibition circuit replicating a section of preserved railway between Swanage and Corfe in Dorset.

Other clubs from east Kent will be joining in as well. The group from Faversham will bring an eight feet square layout depicting Thomas the Tank Engine and Friends especially for younger children to enjoy.

Reputable traders will be offering collectable and pre-loved model trains, accessories and hard-to-find spare parts. The venue offers free onsite parking and light refreshments will be on sale as well. Admission is £5 each for adults while accompanied children under 16 are free.

**A welcome first for the village . . .**

**AYLESHAM**

## Model Railway Exhibition



**15 layouts  
+ trade support**

**Old School, Main Hall  
& Bechange's hall  
Aylesham Community Trust  
Ackholt Road  
Aylesham, nr Dover CT3 3AJ**

**Saturday 8th  
March 2025**

**10am to 4pm**

**Admission:**

**Adults £5,**

**Children free**

(u-16 and accompanied  
by paying adult)



Presented by East Kent Model Railway Society (Whitstable).  
Why not join us? email [ekmrswhitstable@gmail.com](mailto:ekmrswhitstable@gmail.com) for info

St Dunstons at St Dunstons College, nr Aylesham, c 1911 by Tom Henrysdyke

# VILLAGE GUIDE

## LOCAL AUTHORITIES

### ■ AYLESHAM PARISH COUNCIL

**CHAIR:** Cllr Sue Bott

**VICE CHAIR:** Cllr Kay Sutcliffe

Aylesham House, Dorman Avenue South,  
Aylesham CT3 3AD

**Parish Clerk & RFO Kate Robinson**

clerk@ayleshampc.co.uk

07830 312500

**Assistant Clerk Demi Jenkins**

assistantclerk@ayleshampc.co.uk

07897 593030

**Administrator Nicola Purcell**

admin@ayleshampc.co.uk

07830 353872

Monday, Tuesday & Thursday's 09.00-15.00

Website: [www.ayleshampc.co.uk](http://www.ayleshampc.co.uk)

### ■ YOUR DOVER DISTRICT COUNCILLORS

Aylesham and Snowdown form part of Dover District Council's ward of Aylesham, Eythorne and Shepherdswell, represented by three councillors. They are: Maria Mamjan; Jamie Pout; Charles Woodgate.

## CHURCHES

### ■ AYLESHAM BAPTIST CHURCH

Dorman Avenue South CT3 3AA

• Sunday Services 10.30am

• Renew61 - A shared space where it's ok to not be ok - Mondays 10am -12

Contact - [ayleshambaptist@gmail.com](mailto:ayleshambaptist@gmail.com)

find us on facebook search 'Aylesham Baptist'

[www.ayleshambaptistfreechurch.co.uk](http://www.ayleshambaptistfreechurch.co.uk)

### ■ ST PETER'S CHURCH

We are the Parish church of St Peter's Aylesham in the Church of England. Our hall is available for private hire. Phone: 07535 999482.

Facebook: [stpetersaylesham](https://www.facebook.com/stpetersaylesham)

Email: [stpetersaylesham@gmail.com](mailto:stpetersaylesham@gmail.com)

Web: [www.stpetersaylesham.co.uk](http://www.stpetersaylesham.co.uk)

Dorman Avenue North CT3 3BL

Email: [stpetersaylesham@gmail.com](mailto:stpetersaylesham@gmail.com)

### ■ ST FINBARR'S CATHOLIC CHURCH

Market Place, Aylesham CT3 3EZ

Phone: 01304 206766

## HEALTH SERVICES

### ■ AYLESHAM MEDICAL PRACTICE

Aylesham Health Centre, Queens Rd, Aylesham,  
Canterbury CT3 3BB

Phone: 01304 840415

### ■ AYLESHAM HEALTH CENTRE

Queens Rd, Aylesham, Canterbury CT3 3BB

01304 843783

## COMMUNITY GROUPS

### ■ BECHANGE COMMUNITY HUB

At Bechange Community Hub we pride ourselves on our friendly approach and expertise in a wide range of support needs; from Benefits such as universal credit, PIP, DLA and Attendance Allowance, to Housing, Family Matters, Finances and Employment.

Our Support Team can work with you every step of the way, no matter how long or short your support journey. Not sure if your needs fit our support criteria? Get in touch to find out.

We offer Drop-In sessions Monday, Wednesday and Friday 10am-12pm. Or you can contact us by telephoning 01304 840134 with an enquiry, to make an enquiry or referral.

Tel: 01304 840134 [enquiries@bechange.org.uk](mailto:enquiries@bechange.org.uk)

### ■ FOODBANK

If making ends meet is hard for you at the moment, you may be able to get food and household goods from the Foodbank. Please contact Bechange on 01304 840134 or call in at one of their drop-in sessions if you need help.

### ■ AYLESHAM COMMUNITY TRUST

Ackholt Road, Aylesham CT3 3AJ

Tel: 01304 842826

### ■ AYLESHAM MAJORETTES

We are the local Majorette and take part in carnivals, fetes and do displays of what to show off our talent

Email: [ayleshamajorettes@hotmail.com](mailto:ayleshamajorettes@hotmail.com)

Mob: 07709314680

### ■ AYLESHAM WELFARE LEISURE CENTRE

Spinney Ln, Aylesham, Canterbury CT3 3BE:

Phone: 01304 840661



# • Community Notices •



**• Aylesham & Rural •**

Aylesham Community Trust  
Ackholt Road, Aylesham, CT3 3AJ

For a **small weekly fee** local residents can join up as members and access a whole range of benefits

Entrance to a weekly shop at the Pantry

Meet new people or volunteer

Pay by cash or card

£4.50 per shop

**Opening Times**  
 Tuesdays - 9.30am - 12.00pm  
 Thursdays - 12.00pm - 2.30pm  
[www.yourlocalpantry.co.uk](http://www.yourlocalpantry.co.uk)

 @supportbechange1
 @supportbechange
 @bechangecommunityhub20




You can also call us on 01304 840 134

## AYLESHAM CREATIVE COFFEE MORNING

**FREE** light refreshments & friendly chat with Arts & Crafts for People, 55+ years and over



**POTTERY, CERAMICS, CREATIVE CLAY AND MORE**



**10.00am – 12.00Noon**  
 From 14th Jan – 1st April 2025  
 To book your free space  
 Call 01304 842826, email [info@aylesham.org.uk](mailto:info@aylesham.org.uk)  
 or use QR code











**AYLESHAM BAPTIST FREE CHURCH**



# EASTER FAIR

**SATURDAY 29TH MARCH**

**CHOCOLATE TOMBOLA  
 EASTER RAFFLE  
 CRAFT ACTIVITIES  
 EASTER BAKE COMPETITION  
 & MUCH MORE!**






**FREE MEETING  
SPACE FOR COMMUNITY  
ORGANISATIONS**

**in the 'Community HQ' at  
the Aylesham Community  
Trust, Ackholt Road,  
Aylesham.**

*Conditions apply*

**Call for details:  
01304 824826**

# Support Local Business



**DID YOU KNOW ?**

Businesses based in Aylesham or the surrounding area who are interested in growing.

**You should join us!**

The second Thursday of every month at 8 am. DM for more info.



[www.ayleshambusinessnetwork.co.uk](http://www.ayleshambusinessnetwork.co.uk)

## MACS CARS

Family Business Est. 2016

### PRIVATE HIRE

LOCAL AND  
LONG DISTANCE  
SPECIALISTS

"Many thanks to the community in Aylesham and surrounding villages for your support"



**07594 998 468**

## ONE CALL ELECTRICAL

SERVICES LTD

**24HR**  
CALL OUT SERVICE

**01304 841537 07517 607888**

[www.onecallelectricalservices.com](http://www.onecallelectricalservices.com)  
Email: [alan@onecallelectricalservices.com](mailto:alan@onecallelectricalservices.com)

**Emergency Electrician  
any Day or Night  
Available 24 hours**

All kinds of electrical work undertaken  
*No job too small*  
All work insured and certificates issued

- Light Fittings
- Replacement Sockets
- Electrical Installations
- Complete Re-wires
- Electrical supplies
- 24hr Emergency Call Out
- Fully Qualified Engineers



NICEIC  
Approved Contractor  
"Trust Mark" Member  
Fully Part P Registered

Neil Scrivener Stonemason



**Neil Scrivener  
Monumental Stonemason**

[kentstone@hotmail.co.uk](mailto:kentstone@hotmail.co.uk)

**01304 820882 07970 810342**

**Ackholt Road, Aylesham CT3 3AJ**

[kentstonemason.co.uk](http://kentstonemason.co.uk)







Chartered Accountants and Chartered Tax Advisers providing Annual Statutory Accounts, Tax Returns, Payroll Services and VAT Returns to Individuals, Self Employed Businesses, Partnerships, Limited Companies and New Businesses

[chris@brightaccountingsolutions.co.uk](mailto:chris@brightaccountingsolutions.co.uk)

**0203 603 2304**

[www.brightaccountingsolutions.co.uk](http://www.brightaccountingsolutions.co.uk)

3 Garrity House, Aylesham, CT3 3BF

## PLANNING FOR PEACE OF MIND

Helping you to put in place:

- Estate Planning
- Bespoke Wills
- Lasting Powers of Attorney

I can help with applying for a *Grant of Probate* along with other related services

Please call for an appointment on



**01304  
577998**

Now based at Garrity House,  
Ackholt Road Aylesham

or email: [info@slswillsandmore.co.uk](mailto:info@slswillsandmore.co.uk)

[www.slswillsandmore.co.uk](http://www.slswillsandmore.co.uk)

*We keep things simple...and get things done*

- Specialists in helping owner managers exit through sale
- Contact us if you have a potential buyer for your business
- We can help put your house in order so there are no skeletons in the closet
- We will support you through this complex journey, protecting you from future claims and making sure you get paid full value

We are **EXPERTS** at helping business owners through a sale process.



[aly@aly-young-law.co.uk](mailto:aly@aly-young-law.co.uk) | [www.aly-young-law.co.uk](http://www.aly-young-law.co.uk) | 07922 042 816

# AYLESHAM

**IN TOUCH**

NEWSLETTER

## Plans Land for South Aylesham



• Aylesham Parish Council Planning, Environment and Transport Committee is meeting on 25th February, 7pm at the Aylesham Community Trust, Ackholt Road. Members of the public may attend and may speak if they contact the Parish Council in advance.

OUTLINE Planning Permission notices have been lodged with Dover District Council (DDC) regarding the development of the land south of Spinney Lane towards Snowdown. This land is part of the accepted Dover Local Plan and has been planned for development.

The plans are now out for a 30 day public consultation. The Parish Council appears anxious to

ensure the views of local residents are represented in all aspects of the planning process, including provision of additional local services, transport needs, education and social housing.

ONLINE

All the plans so-far submitted can be seen online - search 25/00133 in the DDC online planning portal.

**Become a  
Member of  
Aylesham  
Community  
Trust**



We are keen to encourage new members who can support and help shape the sorts of activities that take place in the old school building and across the site.

**Until further notice, fees will be reduced from £5 to just £1**

Use this link to sign up for this special invitation, or email:

**info@aylesham.org.uk**

